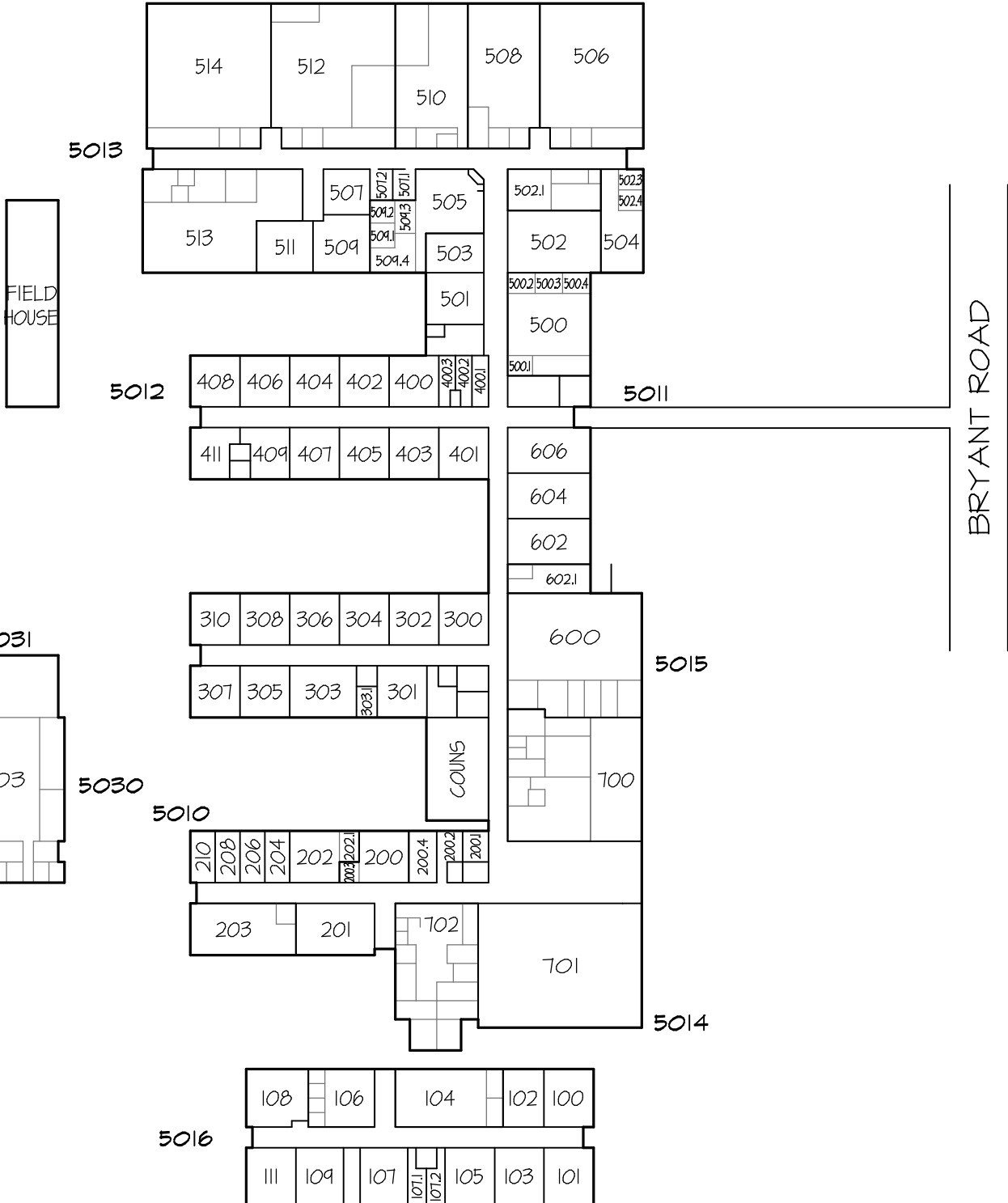


**WALTON COUNTY #747**

4050-MONROE AREA  
 COMPREHENSIVE HIGH SCHOOL  
 BRYANT ROAD  
 MONROE, GA

PARCEL NUMBER - 1140  
 ACREAGE - 23.5

GREEN HOUSE 5050



5-YEAR PLAN FOR  
 MONROE AREA HIGH SCHOOL  
 WALTON COUNTY BOARD OF EDUCATION  
 WALTON COUNTY, GEORGIA

**Sy RICHARDS, ARCHITECT, INC.**

ATLANTA ● GEORGIA

BUILDING PLAN  
 WALTON COUNTY #747  
 DATE: March 6, 2000